



Politechnika
Wroclawska

Academic career

Łukasz Sadowski

lukasz.sadowski@pwr.edu.pl

Wroclaw University of Science and Technology

Faculty of Civil Engineering

Department of Materials Engineering and Construction

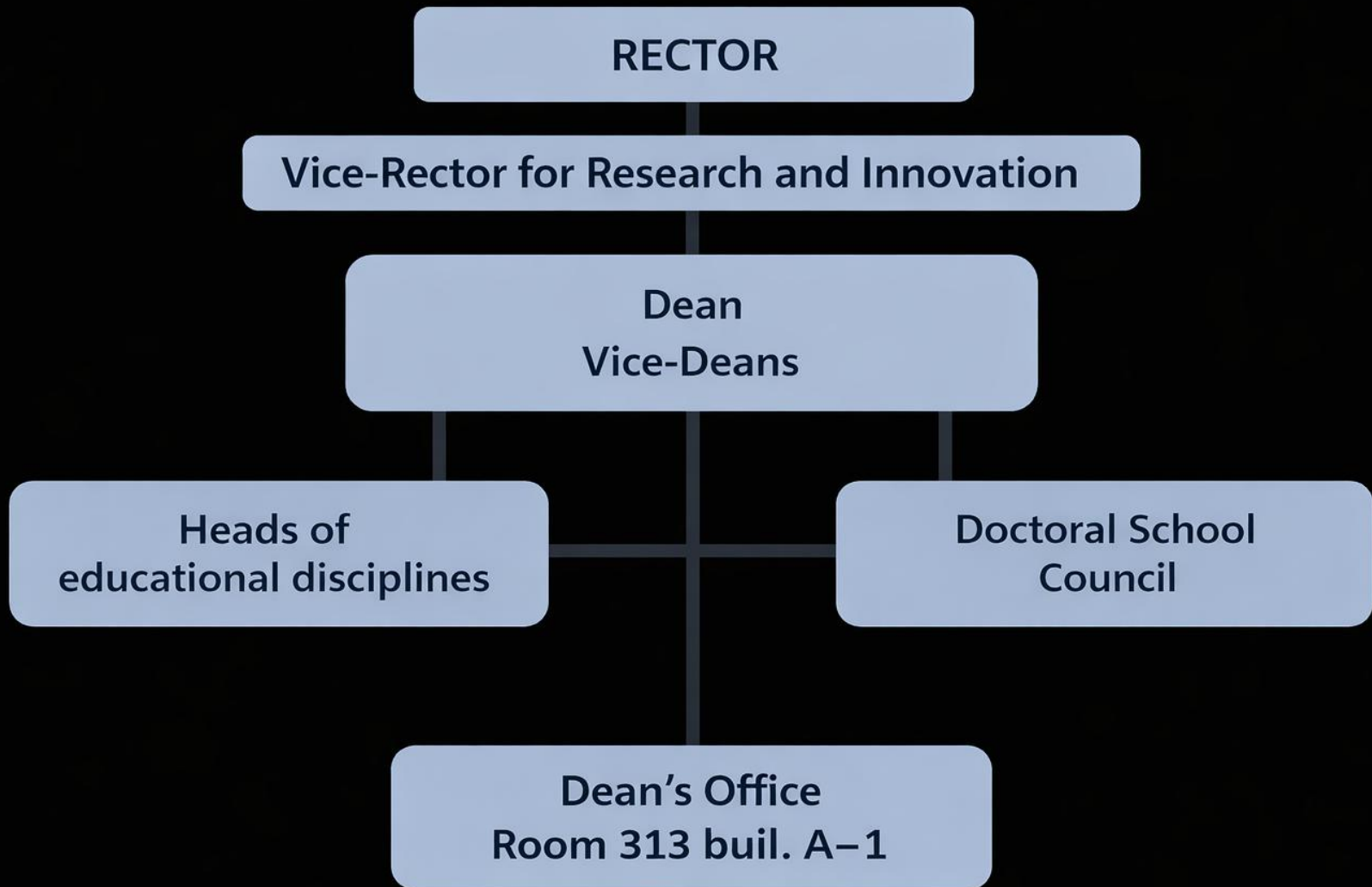
Processes

Question to start

Why did you decide to do a PhD?

Doctoral school – key facts

- PhD duration: 4 years with scholarship,
- Mid-term evaluation after 2 years,
- PhD scholarship increases after mid-term evaluation,
- Publications contribute to discipline evaluation.



Course name	Hours	Semester	Learning outcome	Comments
COMPULSORY COURSES				Courses providing learning outcomes for qualifications at level 8 of the Polish Qualifications Framework (8 PRK) Courses mandatory for all doctoral students 165h in total
Recent research trends in scientific discipline	30	I-IV	SzD_W3, SzD_W6	
Reporting seminar of scientific discipline	60 (4x15)	II, IV, VI, VIII	SzD_W4, SzD_U2, SzD_U3, SzD_U4, SzD_U5	
Research skills	30	I-IV	SzD_W4, SzD_W5, SzD_W6, SzD_W8, SzD_W9, SzD_U2, SzD_U4, SzD_U7, SzD_K3, SzD_K4	
Ethical and legal aspects of scientific activity	15	I-IV	SzD_W7, SzD_K3, SzD_K4	
Personal development	15	I-IV	SzD_U8	
Teaching skills	15	I-IV	SzD_U9	
English language	60 (2x30)	I-IV	SzD_U6	Courses not required for the implementation doctorate
Elective courses	60	I-IV	-	
In total:	285			
ADDITIONAL COURSES				Optional courses, exclusively for doctoral students wishing to undertake additional courses. 120h in total.
Elective courses	60	I-VIII	-	
Foreign language	60 (2x30)	I-IV	-	

Scientific activity

Scientific activity includes:

- **basic research** understood as empirical or theoretical works aimed primarily at gaining new knowledge about the foundations of phenomena and observable facts without any direct commercial application,
- **applied research** understood as work aimed at acquiring new knowledge and skills, aimed at developing new products, processes or services or introducing significant improvements to them.

Scientific activity

Where does your PhD research belong?

- *Basic research?*
- *Applied research?*

Individual study plan

The individual study plan for each semester includes:

- research schedule,
- publications plan,
- conference participation.

Teaching practice:

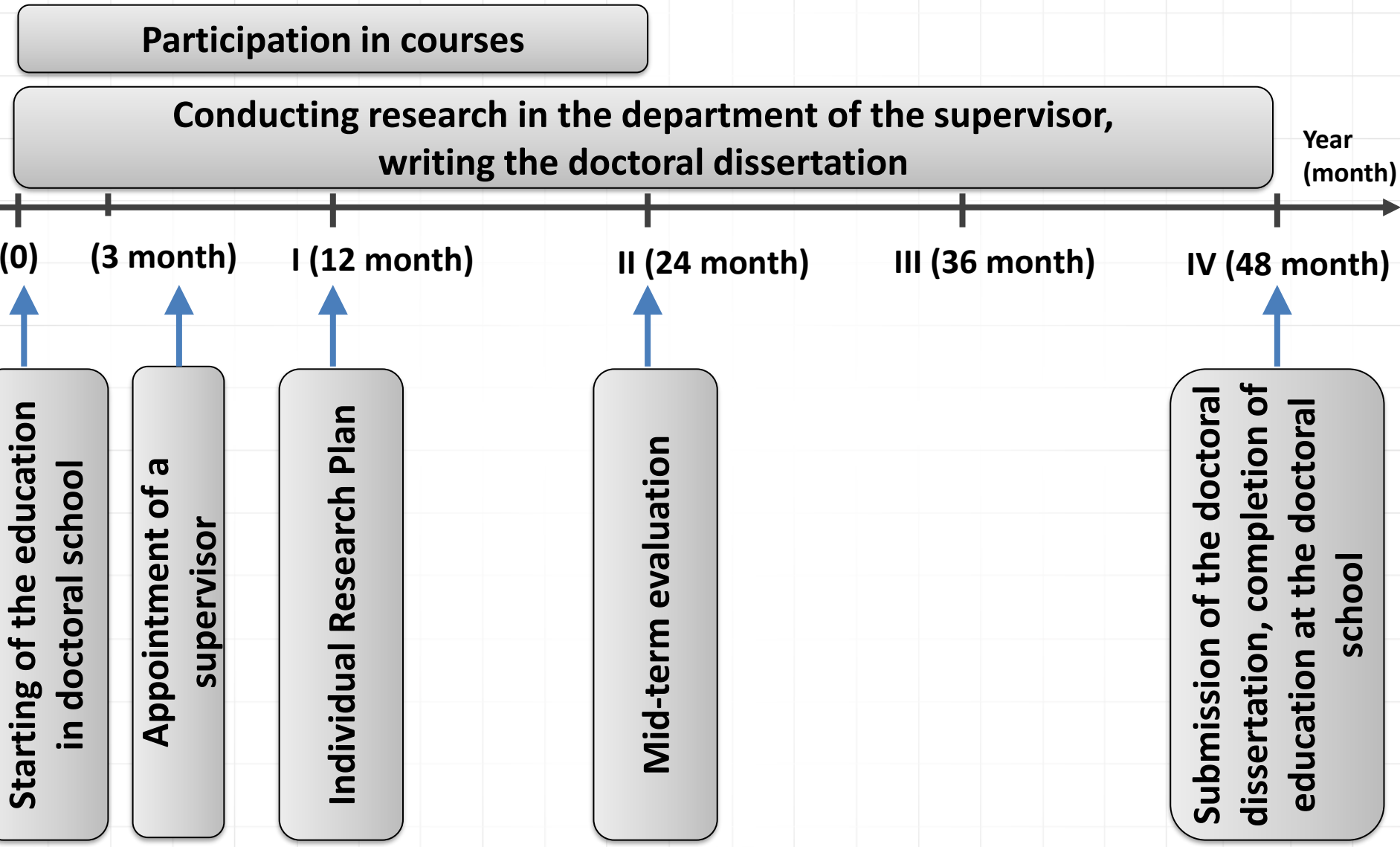
- up to **30** hours per year,
- teaching internships are conducted in the Faculty where the doctoral student's supervisor works,
- teaching internships may be conducted in the form of conducting classes or participating in their conducting.

PhD scholarship

- duration: max 4 years,
- increase after mid-term evaluation,
- possible additional scholarships.

Is anyone here employed in a research project?

Schedule of doctoral school



Quick discussion

What do you think is the most difficult stage of a PhD?

- ***beginning?***
- ***mid-term evaluation?***
 - ***publishing papers?***
- ***writing the dissertation?***

Starting of the education + supervisor

Doctoral school:

- structured PhD training,
- no tuition fees,
- competitive recruitment.

Appointment of supervisor:

- within 3 months from the start.

Discuss with the person next to you (2 minutes):

How often should a PhD student meet the supervisor?

The individual research plan (12 month)

The individual research plan must include:

- a schedule for the preparation of the doctoral dissertation detailing the stages and locations of the research to be conducted,
- including the dates for completing the sub-studies and developing their results, and optionally, depending on the type of research to be conducted.
- a deadline for submission of the dissertation, which must not exceed the date of completion of the eighth semester of education.

Write the expected title of your PhD thesis.

Mid-term evaluation (24 month)

Mid-term evaluation includes:

- research progress,
- presentation,
- discussion.

Result:

positive → continue,

negative → removal from school.

Submission of the doctoral dissertation, completion of education at the doctoral school (48 month)

- The doctoral student's education ends with the submission of a doctoral dissertation,
- An individual research plan specifies the deadline for submitting a doctoral dissertation. This period may be extended, but not longer than by 2 years, on the terms set out in the regulations of the doctoral school,
- Education, at the request of a doctoral student, is suspended for a period corresponding to the duration of maternity leave, leave on the terms of maternity leave, paternity leave and parental leave.

Removal from the list of doctoral students

When PhD may fail:

- negative mid-term evaluation,
- no progress in research,
- missing dissertation deadline,

What do you think is the most common reason?

PhD student rights

How many weeks of holiday do PhD students have?

PhD student rights

- A doctoral student is entitled to holiday breaks not exceeding 8 weeks a year,
- The entity running the doctoral school issues a doctoral student ID card,
- A doctoral student who obtained a doctoral degree as a result of graduating from a doctoral school, the period of education at this school, not longer than 4 years, shall be included in the period of work on which employee rights depend.

Awarding PhD degree

Requirements for PhD:

- master degree,
- scientific publication,
- doctoral dissertation,
- successful defense.

Awarding PhD degree

The doctoral degree (PhD) may be awarded only to a person who has achieved the learning outcomes for qualifications at Level 8 of the Polish Qualifications Framework (PQF):

Level 8 PQF confirms:

- advanced and systematic knowledge in a given discipline, the ability to independently design and conduct scientific research,
- responsibility for the development of science and for the quality and integrity of research.

Achieving Level 8 PQF learning outcomes is a formal legal requirement for awarding the PhD degree in Poland.

Why Are Compulsory Courses Mandatory?

The curriculum of the Doctoral School is designed to ensure that doctoral students achieve learning outcomes at Level 8 PQF:

Completion of:

- compulsory courses,
- teaching practice,
- and the Individual Research Plan (including submission of the doctoral dissertation) leads to the achievement of Level 8 PQF learning outcomes.

Without fulfilling these outcomes, the PhD degree cannot be awarded under Polish law.

Compulsory courses are therefore not optional elements of the programme but part of the formal qualification framework.

Level 8 PQF – Structure of Learning Outcomes

Level 8 PQF includes learning outcomes in three areas:

Knowledge

Highly advanced theoretical and methodological knowledge in a discipline.

Skills

Ability to independently conduct research, formulate scientific problems, design methodologies, analyse results and publish findings.

Social competences

Research integrity, ethical responsibility, critical thinking, ability to work in academic and interdisciplinary environments.

The Doctoral School curriculum is structured to develop all three components.

PhD Is More Than a Research Project

A doctoral degree is not only about completing a research project or publishing papers.

It is a formal qualification at Level 8 PQF.

The university is legally responsible for ensuring that doctoral graduates meet all required learning outcomes.

For this reason, the programme includes research training, ethical and legal aspects, teaching skills and personal development components.

PhD success factors

- clear research problem,
- good supervision,
- publishing strategy,
- international collaboration.

Typical PhD mistakes:

- research problem too broad,
- reading too little literature,
- too many experiments,
- no publication plan,
- poor time management.

Career path after doctorate

Your post-doctorate career path may include:

- Research and teaching at the university as an academic teacher,
- Research work at a university or research institutes,
- R & D-Research and Development,
- Expert activity, including preparation of opinions and expert opinions.

Research and development works are carried out:

- At universities,
- In specialized research and development units,
- In research and development centers in large companies, e.g. Nokia, Google, Microsoft, Apple, Siemens,
- In small and medium-sized companies,
- In startups.

Academic work

Academic teachers are employed in groups of employees:

- teaching (educating and educating students or participating in the education of doctoral students),
- research (conducting scientific activity or participating in the education of doctoral students),
- research and teaching.

An academic teacher is employed in the position:

- professor (after obtaining the title of professor),
- university professor (after obtaining the degree of habilitation),
- assistant professor (after obtaining the doctoral degree),
- assistant (before obtaining the doctoral degree).

Habilitation degree

The habilitation degree is awarded to a person who:

- has achieved scientific achievements that constitute a significant contribution to the development of a specific discipline (monograph or a series of thematically related articles published on the MEiN list),
- demonstrates significant scientific activity carried out in more than one university, scientific institution, in particular foreign.

In Western countries, usually one degree is a doctoral degree. In some countries there is also habilitation (e. g. Germany, France, Portugal).

Title of professor

The title of professor is awarded to a person who:

- holds the academic degree of habilitation and:
 - outstanding domestic or foreign scientific achievements,
 - participated in the work of research teams implementing projects financed by domestic or foreign competitions, or completed research internships in scientific institutions, including foreign ones, or conducted research or development work at universities or scientific institutions, including foreign ones (...)

In exceptional cases (...), the title of professor may be awarded to a person holding a doctoral degree. Achievement, (...), may be a realized original design, construction, technological or artistic achievement.

Tasks to be performed for the next class

1. Familiarize yourself with the Act 2.0 on doctoral schools:
<https://konstytucjadlanauki.gov.pl/pobierz-ustawe>
2. Read the frequently asked questions about Act 2.0:
<https://konstytucjadlanauki.gov.pl/ksztalcenie-doktorantow-najczesciej-zadawane-pytania>
3. Familiarize yourself with the legal acts of Wrocław University of Science and Technology regarding doctoral students:
<https://szd.pwr.edu.pl/o-szkole/akty-prawne>

Discussion

What worries you most about your PhD?